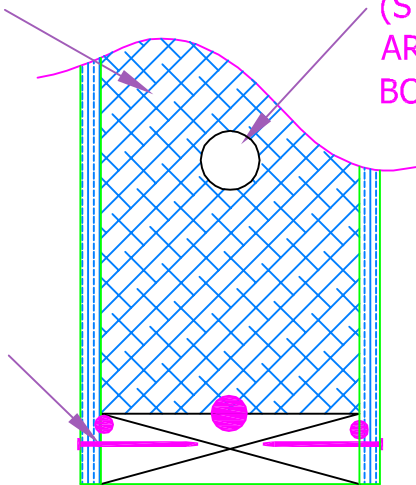


3/8"-1/2" MASTIC
TYPICAL EACH SIDE AND TOP

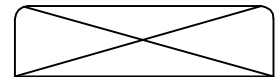
FORCE WALL
PANEL UP TO
24' LENGTHS

STANDARD
ELECTRICAL CHASE
(STANDARD HEIGHTS
ARE 16" AND 45" FROM
BOTTOM OF PANEL)

8d NAILS @ 6" O.C. OR
EQUIVALENT EACH SIDE.
U.N.O.



HELPFUL HINT:
SLIGHTLY CHAMFER
TOP OF 2x OR WOOD
MEMBER



PBS-009

PANEL TO PLATE CONNECTION
FORCE PANELS



FORCE
P A N E L S